

SYSTEM SOFTWARE INSTALLATION AND CONFIGURATION

A. Pico Scope 6

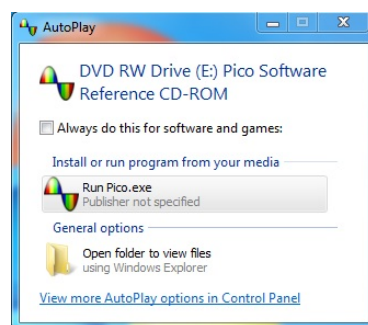
- 1) Insert Pico Technology system disk to computer



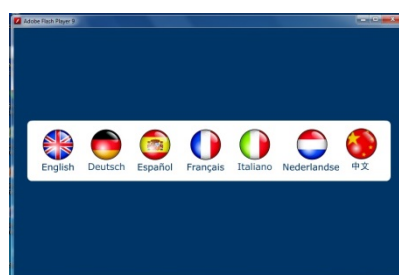
- 2) Select “pico” Application, Enter

Name	Date modified	Type	Size
Files Currently on the Disc (9)			
document	25/8/2554 16:25	File folder	
fscmmand	25/8/2554 16:25	File folder	
software	25/8/2554 16:25	File folder	
utilities	25/8/2554 16:24	File folder	
autorun	24/9/2552 18:15	Setup Information	1 KB
pico	27/5/2554 17:17	Application	5,923 KB
PicoAutomotiveCatalogue	31/8/2553 16:16	Adobe Acrobat D...	1,713 KB
PicoCatalogue	6/6/2554 16:48	Adobe Acrobat D...	3,335 KB
readme	25/8/2554 15:46	Text Document	4 KB

- 3) Select “Run Pico.exe” from AutoPlay, Enter



- 4) Select language menu as “English”, Enter



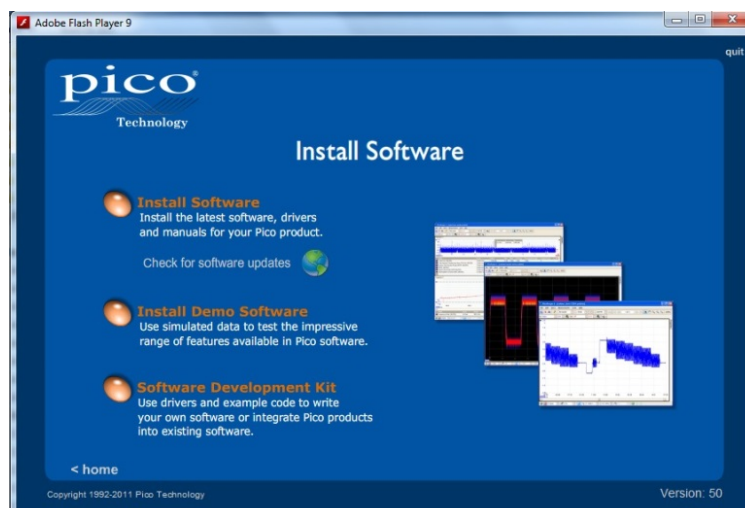
5) Select “USB oscilloscope”, Enter



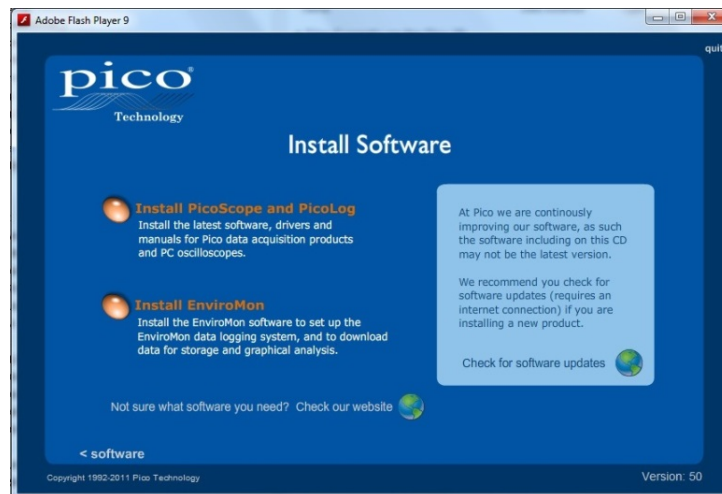
6) Select “Install Software”, Enter



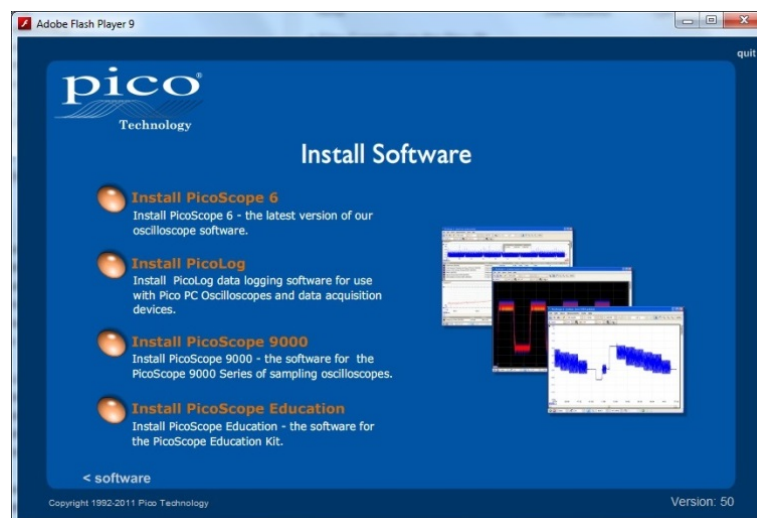
7) At Install Software, select “Install Software”, Enter



8) Select “Install PicoScope and PicoLog”, Enter



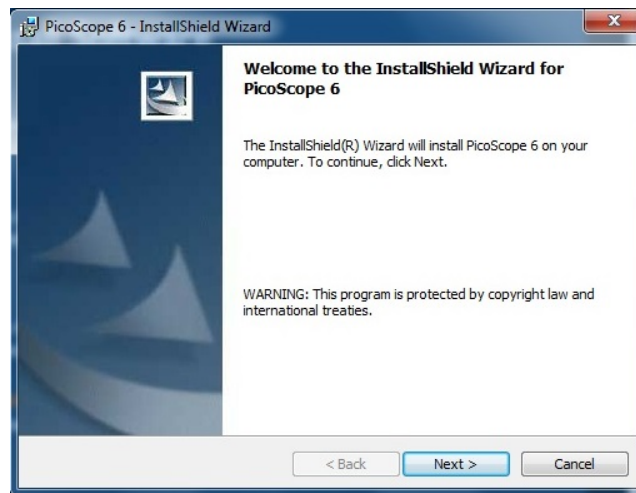
9) Select “Install PicoScope 6”, Enter



10) Select the language for the installation from the choices given such as “English (United States)”, OK



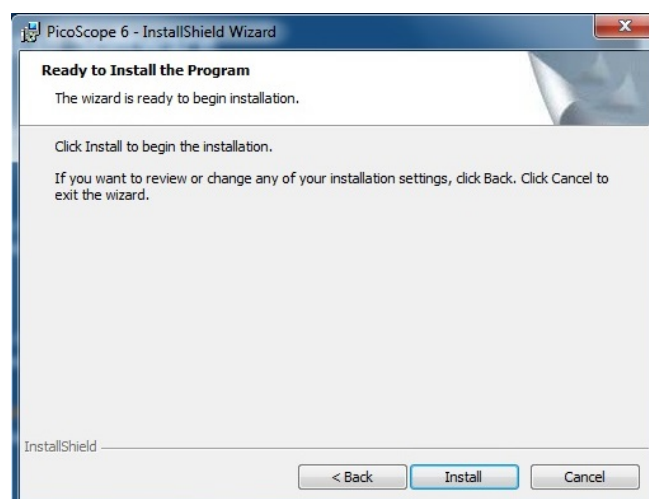
11) At Welcome to the Install Shield Wizard for PicoScope 6, select “Next >”, Enter



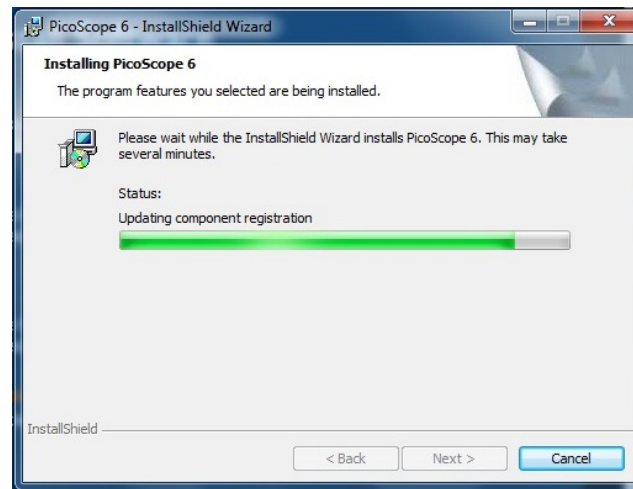
12) At License Agreement window, select “I accept the terms in the agreement”, Next>, Enter.



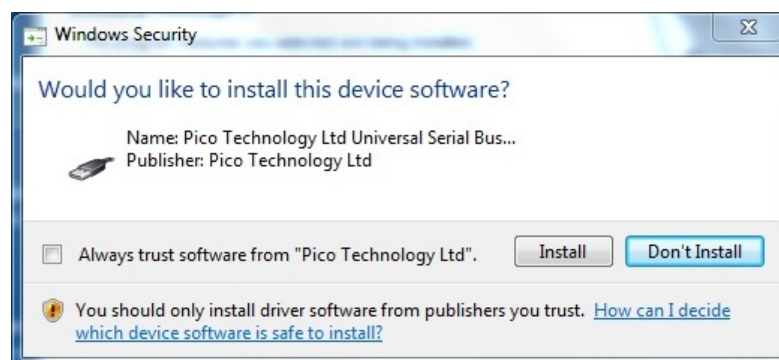
13) At Ready to Install the Program, select “Install”, Enter



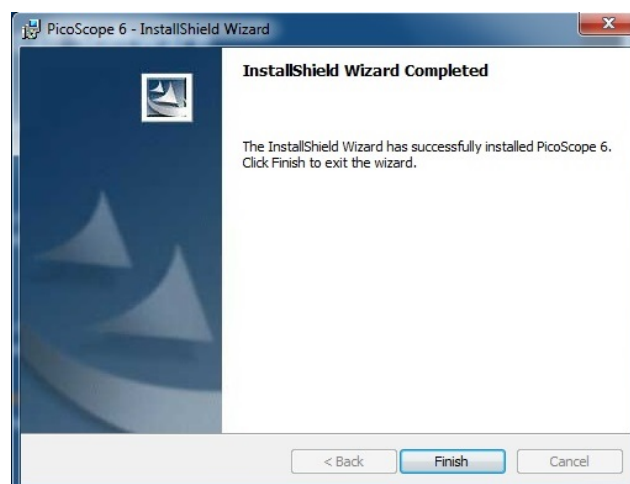
- 14) During Installing PicoScope 6, please wait while the installShield Wizard installs PicoScope 6 is finished,



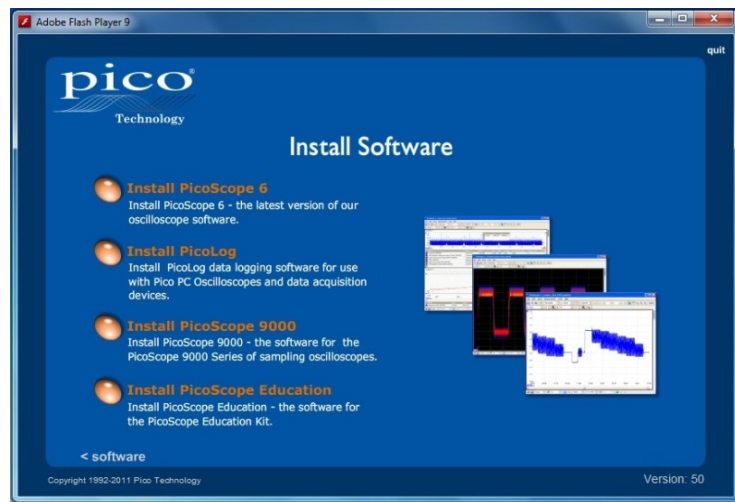
- 15) On windows Security asking for installing this device software, select “Always trust software from “Pico Technology Ltd.”, “Install”, Enter



- 16) At InstallShield Wizard Completed windows, select “Finish”, Enter



17) Select “Quit” on Pico Technology Install Software windows



18) After completing the PicoScope 6 installation, the “PicoScope 6” icon will show on the computer display screen



B. Aqua Sound

1) Insert FishFinder Version 3.6 system disk of AquaSound into computer

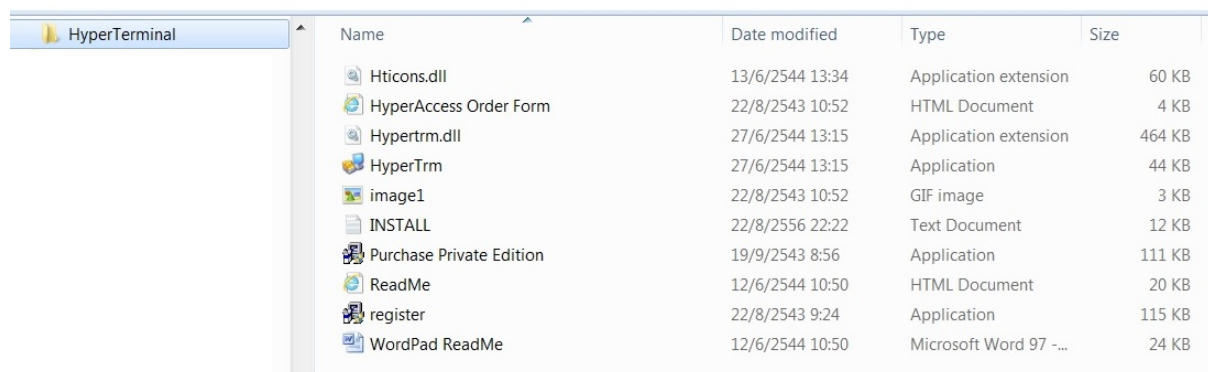


- 2) Copy V3b6_FishFinder application to drive c: V3b6_FishFinder application icon will appear on drive c: screen.



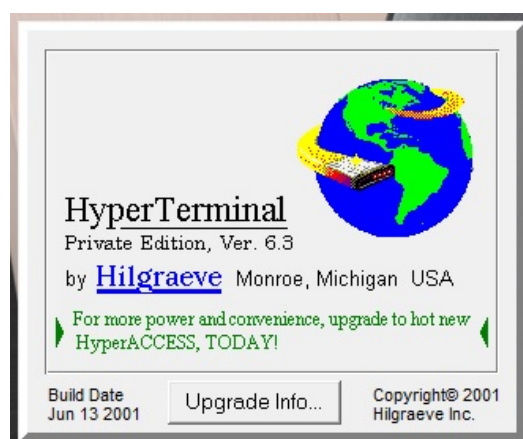
C. Hyper Terminal

- 1) Load Hyper Terminal software into the computer. Select “HyperTrm” Application, Enter

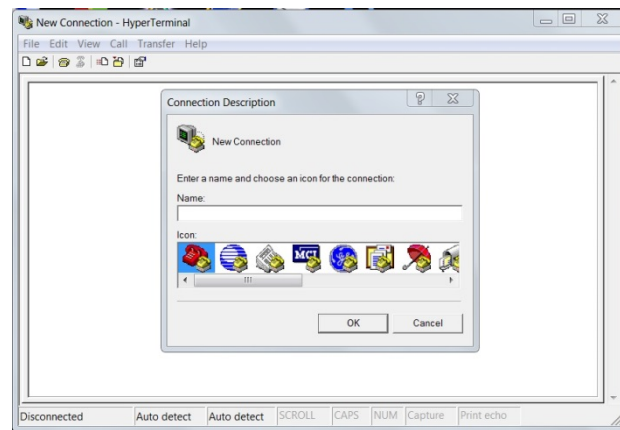


Name	Date modified	Type	Size
Hticons.dll	13/6/2544 13:34	Application extension	60 KB
HyperAccess Order Form	22/8/2543 10:52	HTML Document	4 KB
Hypertm.dll	27/6/2544 13:15	Application extension	464 KB
HyperTrm	27/6/2544 13:15	Application	44 KB
image1	22/8/2543 10:52	GIF image	3 KB
INSTALL	22/8/2556 22:22	Text Document	12 KB
Purchase Private Edition	19/9/2543 8:56	Application	111 KB
ReadMe	12/6/2544 10:50	HTML Document	20 KB
register	22/8/2543 9:24	Application	115 KB
WordPad ReadMe	12/6/2544 10:50	Microsoft Word 97 -...	24 KB

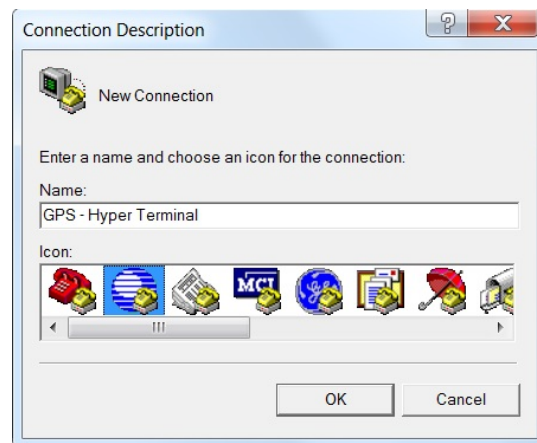
- 2) Hyper Terminal program start-up will appear on display as follows:



- 3) Connection Description windows will appear for information selection



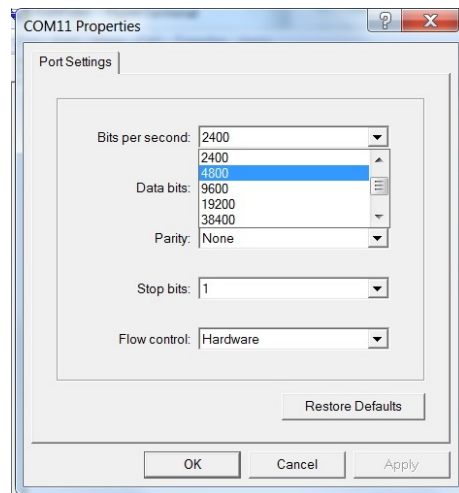
- 4) Enter Name of connection, (For example: “GPS – Hyper Terminal”)
Select type of icon for current connection



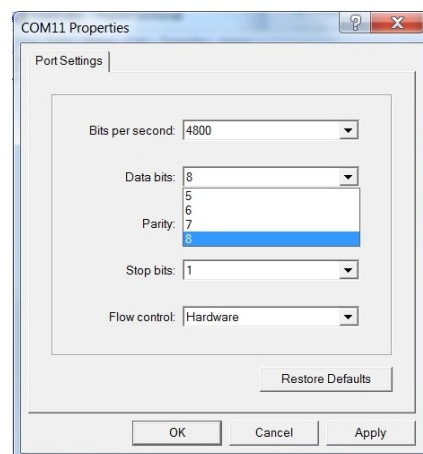
- 5) At “Connect To” windows, select “Connect using:” by selecting from available COM port. Available COM port can be checked by following steps:
Control Panel > Hardware and Sound > Device and Printer > Device Manager > Port (COM & LPT).



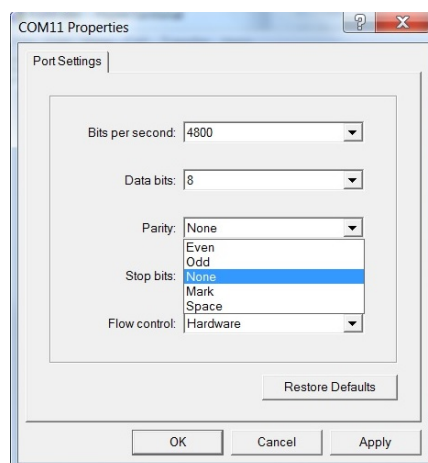
6) At “Port Setting” windows, choose “Bits per second:” as 4800.



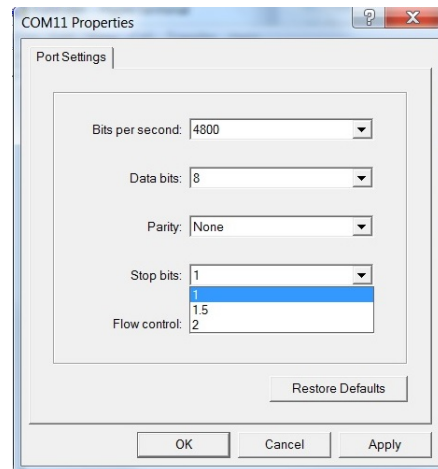
7) At “Port Setting” windows, choose “Data bits:” as 8



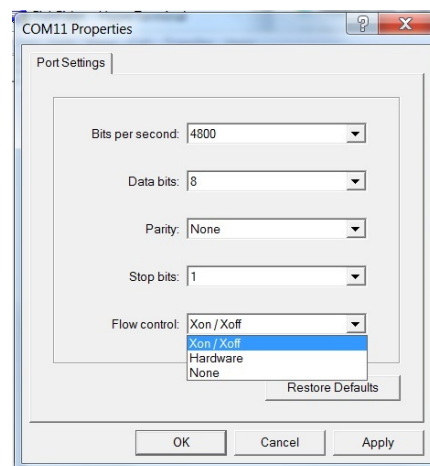
8) At “Port Setting” windows, select “Parity:” as None



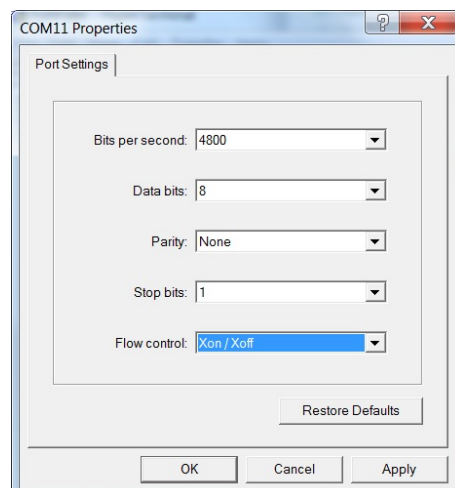
9) At “Port Setting” windows, select “Stop bits:” as 1



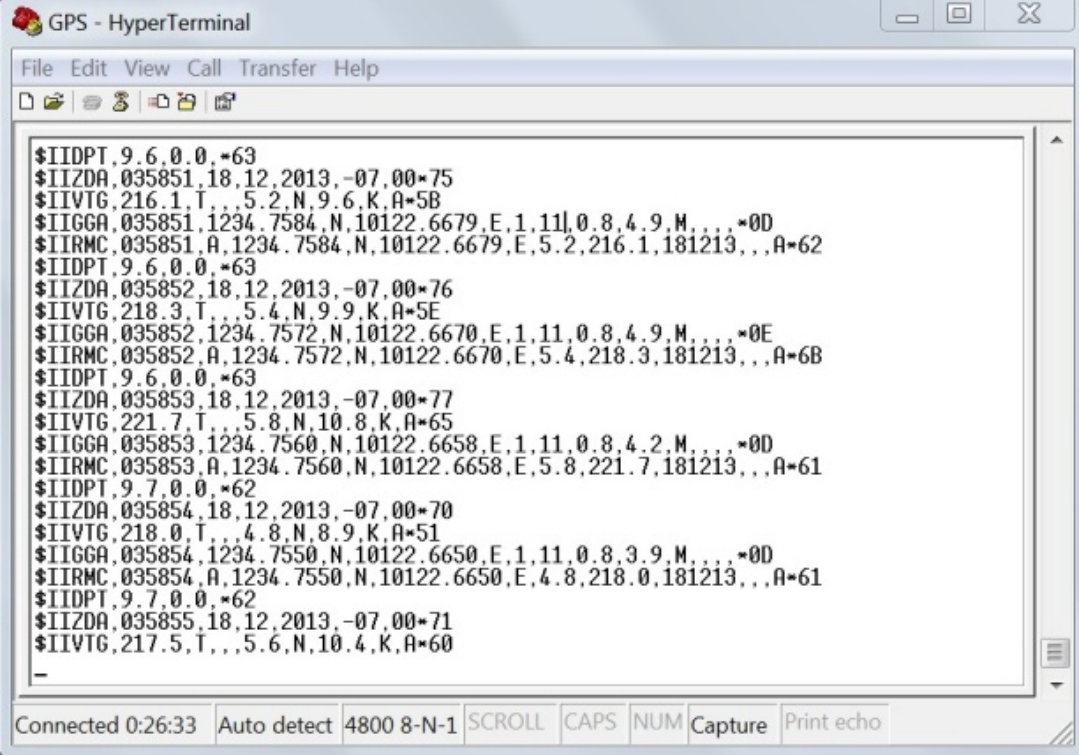
10) At “Port Setting” windows, select “Flow control:” as Xon/Xoff



11) After completing Port Setting, enter OK.



- 12) The Hyper Terminal program will start-up with GPS – Hyper Terminal module as already set up.



The screenshot shows a window titled "GPS - HyperTerminal". The menu bar includes "File", "Edit", "View", "Call", "Transfer", and "Help". Below the menu bar is a toolbar with icons for file operations. The main text area displays a series of NMEA sentences received from a GPS device, including position, time, and speed data. At the bottom of the window, a status bar shows "Connected 0:26:33" and several control buttons: "Auto detect", "4800 8-N-1", "SCROLL", "CAPS", "NUM", "Capture", and "Print echo".

```
$IIDPT,9.6,0.0,*63
$IIZDA,035851.18,12,2013,-07,00*75
$IIVTG,216.1,T,,5.2,N,9.6,K,A*5B
$IIGGA,035851.1234.7584,N,10122.6679,E,1.11,0.8,4.9,M,,,*00
$IIRMC,035851,A,1234.7584,N,10122.6679,E,5.2,216.1,181213,,A*62
$IIDPT,9.6,0.0,*63
$IIZDA,035852.18,12,2013,-07,00*76
$IIVTG,218.3,T,,5.4,N,9.9,K,A*5E
$IIGGA,035852.1234.7572,N,10122.6670,E,1.11,0.8,4.9,M,,,*0E
$IIRMC,035852,A,1234.7572,N,10122.6670,E,5.4,218.3,181213,,A*6B
$IIDPT,9.6,0.0,*63
$IIZDA,035853.18,12,2013,-07,00*77
$IIVTG,221.7,T,,5.8,N,10.8,K,A*65
$IIGGA,035853.1234.7560,N,10122.6658,E,1.11,0.8,4.2,M,,,*00
$IIRMC,035853,A,1234.7560,N,10122.6658,E,5.8,221.7,181213,,A*61
$IIDPT,9.7,0.0,*62
$IIZDA,035854.18,12,2013,-07,00*70
$IIVTG,218.0,T,,4.8,N,8.9,K,A*51
$IIGGA,035854.1234.7550,N,10122.6650,E,1.11,0.8,3.9,M,,,*00
$IIRMC,035854,A,1234.7550,N,10122.6650,E,4.8,218.0,181213,,A*61
$IIDPT,9.7,0.0,*62
$IIZDA,035855.18,12,2013,-07,00*71
$IIVTG,217.5,T,,5.6,N,10.4,K,A*60
```

Connected 0:26:33 Auto detect 4800 8-N-1 SCROLL CAPS NUM Capture Print echo