

RIHN News



Research Institute for Humanity and Nature

Number 6, January 2013



Photo: Aysun Uyar

Contents

Page 1

What is New?

International Symposium on Future Asia

GEC-Japan/Asia Platform Corner

Page 2

Volume Special

Regional Environmental Governance Workshop (EE-REG)

International Relations

GEC-Japan/Asia Visiting Fellowship

Recent Events

Upcoming Events

Notice Board

Recent Publications

International Symposium on Future Asia



Our first GEC-Japan/Asia Platform international symposium “Bridging Science, Technology and Society: Practices of Transdisciplinary Implementation on Sustainability and Environmental Change in Future Asia” was held during 13-14 December 2012 in Kyoto. We picked the keyword “Future Asia” to emphasize our broad vision of turning the GEC-Japan Platform into a larger body of sustainability and environmental change initiative in Asia and our aim to connect these activities to the Future Earth initiative. Our participants were from sub-regional, regional and international bodies that are involved with issues as well as already established platforms of research

collaboration. We discussed on future possible ways of enhancing consciousness and further communication on sustainability and global change issues in Asia and drew our general comment on the obvious fact that we need to communicate through more functional and inclusive mechanisms to address our urgent problems and go beyond our societal, political and academic borders. You can reach program details and presentation materials at our website: <http://www.chikyu.ac.jp/gec-jp/>

You can visit our homepage for further information on events and news (http://www.chikyu.ac.jp/index_e.html)

You can also send us your feedback about our RIHN News and also share your questions, comments,

E-mail: [rihn-news\[at\]chikyu.ac.jp](mailto:rihn-news[at]chikyu.ac.jp) ([at]=@)

Tel: +81-75-7072100

HAPPY NEW YEAR!

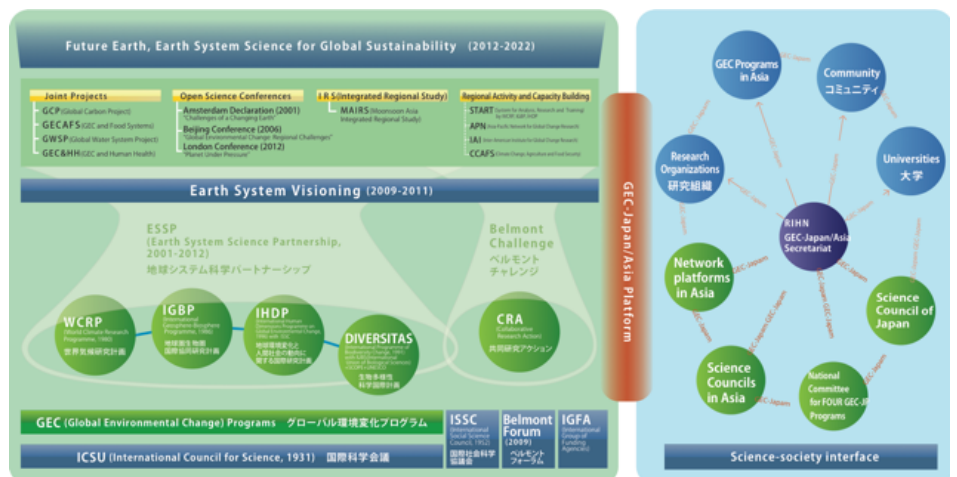
We wish all RIHN community and colleagues a successful, healthy, productive and more sustainable new year in 2013.

新年おめでとうございます。昨年は大変お世話になりました。今年もどうぞよろしくお祈り申し上げます。



GEC-Japan/Asia Platform Corner

As we extended our activities under the new platform name of “GEC-Japan/Asia” in December 2012, we also drafted a new chart to present the position of the new platform within Asian, Japanese and global environmental change frameworks. The chart also shows our mid-term and long-term agenda including which stakeholders and groups we would like to link with and share our network. You can follow the recent activities on our website. <http://www.chikyu.ac.jp/gec-jp/>



Recent Events

- BRIT XXII 2012

November 13-16 (Fukuoka, Japan and Busan, South Korea)

RIHN organized a panel on
“*De-bordering Environmental Change and its Impacts on the Concepts of Boundaries and Human Security*”

- All RIHN In-house Project Presentations Days

December 5-7 (Coop, Kyoto)

- Symposium

December 8 (Kyoto University, Kyoto)

“*20 Years of Tropical Forest Research in Ranbir*”

- 48th RIHN Public Seminar

January 18 (RIHN, Kyoto)

“*Thinking about a Distant World: Development Assistance in Africa*”

- 20th NIHU Public Seminar

January 25 (Yurakucho Asahi Hall, Tokyo)

“*Commons: Sharing for the Richness*”

Volume Special:

Interdisciplinary Workshop: Comparing Regional Environmental Governance in East Asia and Europe (EE-REG)



With collaboration of RIHN and University of Geneva, we organized an exploratory international workshop to compare the current regional environmental governance mechanisms in Europe and East Asia. Thanks to the funding support from RIHN, NIHU (National Institute for the Humanities, SNF (Swiss National Science Foundation) and

GEC-Japan/Asia Platform, we brought together experts, from both natural and social sciences, on region and regional governance of environmental issues and tried to look beyond current examples of regional governance with interdisciplinary perspectives.

In order to achieve this, the workshop specifically focused on three main themes, framing the region, crafting the region and reverberating beyond the region with topical panels on rivers/seas, mountains, extreme climate events and air pollution/haze. You can find further details on the rationale, detailed program and participants of the workshop and our presentation materials on our website: http://www.reg-observatory.org/events/eereg/eereg_index.php

International Relations:

GEC-Japan/Asia Visiting Fellowship

As one of the activities of the GEC-Japan/Asia Platform, we invite experts on transdisciplinary sustainability research and researchers who are interested in interdisciplinary environmental studies, as special GEC-Japan/Asia visiting fellows. Our first GEC-Japan/Asia fellow, Dr. Jörg Balsiger (Senior Researcher, University of Geneva), has a background in international politics and regional environmental governance and has been working on the theories of regional environmental governance as well as actively involved with regional environmental organizations. Dr. Balsiger is invited to share his experiences and constructively work on improvement of the GEC-Japan/Asia platform and Future Asia vision during his stay.

Upcoming Events

- 49th RIHN Public Seminar

February 15 (Heartpia, Kyoto)

“*Living a nature you know as yourself*”

- 4th Kyoto Environmental Culture Academic Forum

February 16 (KICC, Kyoto)

- 4th Earth Hall of Fame Kyoto Prize

February 17 (KICC, Kyoto)

- 2nd Environmental Isotope Study Symposium

February 18-19 (RIHN, Kyoto)

- International Conference

March 14-15 (Monash University Sunway Campus, Malaysia)

“*Climate Change & Natural Disasters in Asia: Emerging Food Security and Eco-Health Issues*”

- The COMMONS

14th Global Conference of the International Association for the Study of the Commons,

June 3-7, 2013 (Mt. Fuji, JAPAN)

Call for proposals for IASC2013 Kita Fuji Conference is open now:

<http://iasc2013.org/en/index.html>

Notice Board

• Project Applications

- If you are interested in initiating a research proposal at RIHN, you can first apply with your proposal to be evaluated for Incubation Study. Deadline for this application is usually end of March or beginning of April. For further details on research project application procedures and exact deadlines, please contact our office.

Contact: RIHN Research Cooperation Section, [kenkyou\[at\]chikyu.ac.jp](mailto:kenkyou[at]chikyu.ac.jp) ([at]=@)

• Job Openings

- Please check our homepage for the recent and updated job openings.

http://www.chikyu.ac.jp/index_e.html

Recent Publications

- RIHN Prospectus (back numbers)

http://www.chikyu.ac.jp/archive/brochure/2012/index_e.html

- RIHN News (back numbers)

http://www.chikyu.ac.jp/archive/RIHN_News/index_e.html

- RIHN Leaflet 2012

http://www.chikyu.ac.jp/archive/documents/leaflet/index_e.html

- RIHN Annual Report 2010

http://www.chikyu.ac.jp/archive/annual_report/index_e.html

- RIHN Book Series:

The Dilemma of Boundaries
(Eds. Taniguchi and Shiraiwa, Springer, 2012)

<http://www.springer.com/environment/book/978-4-431-54034-2>