



Photo: Park, Hong

Contents

Page 1

What is New?

RIHN at Rio+20

GEC-Japan Platform Corner

Page 2

Volume Special

11th RIHN Regional Seminar

Call for 2013 Visiting Fellowships

Upcoming Events

Recent Events

Notice Board

Recent Publications

You can visit our homepage for further information on events and news (http://www.chikyu.ac.jp/index_e.html)

You can also send us your feedback about our RIHN News and also share your questions, comments,

E-mail: [rihn-news\[at\]chikyu.ac.jp](mailto:rihn-news[at]chikyu.ac.jp) ([at]=@)

Tel: +81-75-7072100

We drafted a new poster of the GEC-Japan (Global Environmental Change-Japan) platform to present the link and our position with Japanese as well as global environmental change frameworks. The chart also shows our mid-term and long-term agenda including which stakeholders and groups we would like to link with and share our network. You can follow the recent activities on our website. <http://www.chikyu.ac.jp/gec-jp/>

RIHN at Rio+20

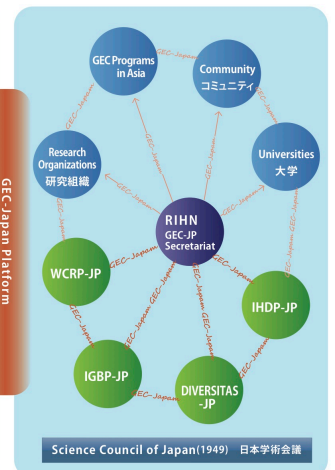
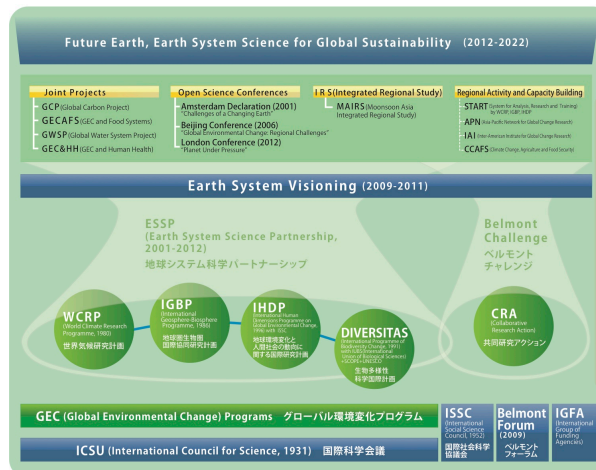


RIHN participated various events that took place around the official UN Conference on Sustainable Development during June 20-22, 2012 in Rio de Janeiro. We especially put special emphasis on our mission to convey and discuss the agenda of GEC-Japan Platform and transdisciplinarity networks with delegates from the events of the Scientific and Technological Community. We participated the events of *Forum on Scientific, Technology and Innovation for Sustainable Development and Fair Ideas: Sharing Solutions for a Sustainable Planet*. Most of the discussions during these conferences underlined the need for promotion of inter-sectoral, interdisciplinary as well as transdisciplinary approaches and building new visions to go beyond political, economic and societal limitations of the decision-making bodies. And the main question was constantly repeated: How to sustain development with aware, fair and timely social, economic and environmental policies and actions? RIHN is committed to contribute to the post-Rio+20 academic and transdisciplinary discussions from now on too.



GEC-Japan Platform Corner

We organized the first GEC-JP workshop on May 17 by focusing on Japan's first proposal for the Belmont Forum call for initiation of new collaborative research actions on the theme of "Social-Ecological Innovation" with emphasis on urban-rural transition. We gathered senior and young researchers from natural and social sciences as well as humanities to underline the fundamental necessity for more social science and humanities approaches and implementation in global environmental and sustainability change research. This time, each participant has presented his/her own experience about interdisciplinary research on global environmental change and we are now revising our new CRA initiative for the next workshop.



Recent Events

- **Ecology Lecture Series,**
May 17, 24, 31, June 7, 14, July 5
(RIHN and Kyoto Seika University,
Kyoto)

- **47th RIHN Public Seminar,**
June 22 (RIHN, Kyoto)
“*Environmental degradation in
Southeast Asia and future direction of
our dining*”

http://www.chikyu.ac.jp/archive/event/public_seminar/47/20120622_47miniseminar_47.pdf

- **Special Event,**
July 7 (RIHN, Kyoto)
“*International Symposium on Protection
of Orangutans*”

(with Borneo Conservation Trust)

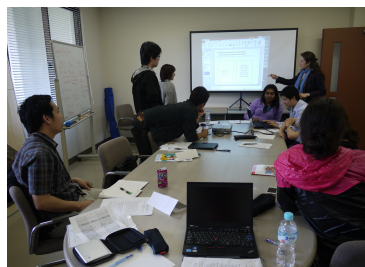
- **10th RIHN Forum,**
July 8 (KICC, Kyoto)
“*Creation of `Connection`*”

http://www.chikyu.ac.jp/archive/event/forum/11/forum_20120708.pdf

- **International Workshop,**
July 25-26 (RIHN, Kyoto)
“*Subsurface Warming and Geothermal
Energy*”

(with Sumitomo Fund, RIHN
Initiatives, and RIHN China)

Volume Special: 11th RIHN Regional Seminar



The 11th RIHN Regional Seminar took place in Fukuoka with institutional collaboration of the Kyushu University Research Institute for East Asia Environments (RIEAE) on June 10, 2012. Main theme of the seminar was “East Asian Environmental Security: Calling for Transboundary Solutions”. As the theme was calling for regional and transboundary cooperation as well as discussions, we thought that it was best to gather the next generation of East Asia and ask them to share and discuss their opinions and search for possible solutions. For this aim, RIHN and RIEAE organized a joint workshop on East Asian environmental security by inviting about 25 international graduate students of Kyushu University. Students were selected among students from China, South Korea, Japan and ASEAN countries to join the workshop during May 19 and 20, 2012 in Kasuya Forest Research Zone of Kyushu University. Participants were invited to openly discuss emerging environmental issues in their own countries, in Japan and in East Asia at regional level. We also asked them to examine the meaning of “international cooperation” given their own backgrounds and each sub-group has come up with quite promising cooperation models and these impressive results were presented during the Regional Seminar of June 10. This very first graduate student workshop and interaction of RIHN was very successful that we now plan to release the discussions and results of the workshop and the seminar in a book.

Upcoming Events

- **2012 RIHN Open House,**
The third RIHN open day will take place on August 3 (Friday) at RIHN facilities. We planned interesting events like joint experiments, public talks, exhibitions and games in order to deepen our interaction with public. In case you are around on that day, please come and join us.

<http://www.chikyu.ac.jp/rihn/openhouse2012/>

- **18th RIHN China Workshop**
August 2 (RIHN, Kyoto)
“*Report on the status of health care
coverage in rural Yunnan area, China*”

- **7th RIHN International
Symposium,**
October 24-26 (RIHN, Kyoto)

- **The COMMONS
14th Global Conference of the
International Association for the
Study of the Commons,**
June 3-7, 2013 (Mt. Fuji, JAPAN)
Call for proposals for IASC2013 Kita
Fuji Conference is open now:
<http://iasc2013.org/en/index.html>

Open Call for 2013 Visiting Research Fellowship at RIHN

Call for Visiting Research Fellowship of RIHN has just started for those who have an interest in research projects of RIHN and would like to stay at RIHN as an affiliate of a research project in a given period from three months to one year during fiscal year of 2013 (April 1, 2013 – March 31, 2014).

Deadline for application is September 20 (Tuesday). For those who are interested in this application, please check further details of application guidelines at this link:
http://www.chikyu.ac.jp/rihn_e/position/visiting_research_fellow_2012.html

Notice Board

• Project Applications

- If you are interested in initiating a research proposal at RIHN, you can first apply with your proposal to be evaluated for Incubation Study. Deadline for this application is usually end of March or beginning of April. For further details on research project application procedures and exact deadlines, please contact our office.

Contact: RIHN Research Cooperation
Section, [kenkyou\[at\]chikyu.ac.jp](mailto:kenkyou[at]chikyu.ac.jp)
([at]=@)

• Job Openings

- Please check our homepage for the recent and updated job openings.
http://www.chikyu.ac.jp/index_e.html

Recent Publications

- **(New)**
RIHN Prospectus 2012-2013

http://www.chikyu.ac.jp/archive/brochure/2012/index_e.html

- **RIHN News (back numbers)**

http://www.chikyu.ac.jp/archive/RIHN_News/index_e.html

- **RIHN Leaflet 2012**

http://www.chikyu.ac.jp/archive/documents/leaflet/index_e.html

- **RIHN Annual Report 2010**

http://www.chikyu.ac.jp/archive/annual_report/index_e.html

- **RIHN Book Series:**

The Dilemma of Boundaries
(Eds. Taniguchi and Shiraiwa,
Springer, 2012)

<http://www.springer.com/environment/book/978-4-431-54034-2>