

Contents

Page 1

What is New?

Planet Under Pressure Conference

GEC-Japan Platform Corner

Page 2

Volume Special

The 6th World Water Forum

Research at RIHN

Upcoming Events

Recent Events

Notice Board

Recent Publications

You can visit our homepage for further information on events and news

(http://www.chikyu.ac.jp/index_e.html)

You can also send us your feedback about our RIHN News and also share your questions, comments,

E-mail: [rihn-news\[at\]chikyu.ac.jp](mailto:rihn-news[at]chikyu.ac.jp) ([at]=@)

Tel: +81-75-7072100

Planet under Pressure Conference



RIHN has participated the Planet under Pressure Conference: New Knowledge towards Solutions (26-29 March, London) by co-organizing two sessions and with presence of 18 RIHN researchers. The conference was of great importance for future direction of earth system science for global sustainability and global change researches. There were various

parallel sessions and topics mainly introducing inter- and trans-disciplinary efforts that stakeholders of global change and global environmental change research and policies have been working on. Main target was to provide international community with a concrete framework on how science community is positioning itself within discussions towards Rio+20 (UN Conference on Sustainable Development) and further agenda to address global sustainability issues (State of the Planet Declaration, http://www.planetunderpressure2012.net/pdf/State_of_the_Planet_Declaration.pdf)

RIHN has co-organized the following sessions by collaborating with other leading institutions on environmental change and sustainability. Each session was a great success with high interest from the participants and inspired discussions that led new initiatives among researchers with similar interests. We will soon publish the results of our discussion and papers of the Asian Vision session in an edited book form.

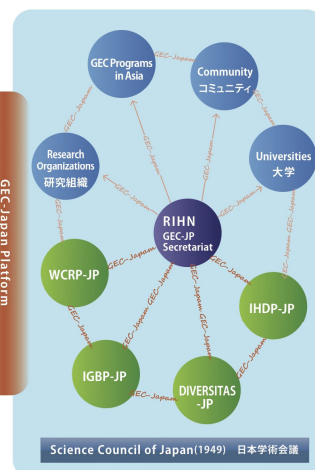
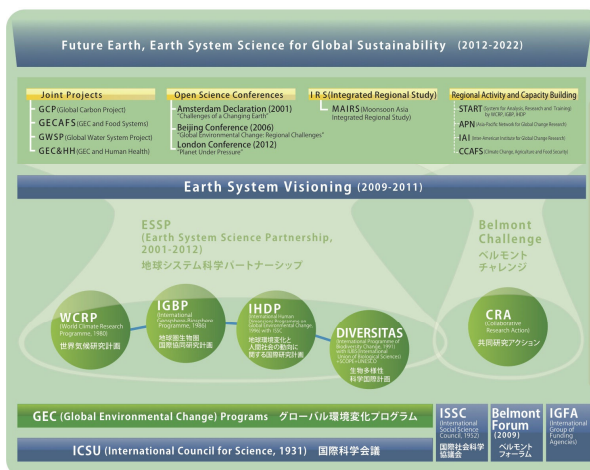
1. Asian Vision on Transdisciplinary Sustainability Development and Environmental Research Day 2: Options and Opportunities, Theme B: Transforming our way of living: development pathways under global environmental change (http://www.planetunderpressure2012.net/pup_session.asp?19082).

2. Water: Integrated Assessment, Governance and Management in Changing Conditions at Global, Regional and Trans-boundary Levels Day 2, Theme A: Meetings global needs: food, energy, water and other ecosystem services (http://www.planetunderpressure2012.net/pup_session.asp?19116).



GEC-Japan Platform Corner

We drafted a new poster of the GEC-Japan (Global Environmental Change-Japan) platform to present the link and our position with Japanese as well as global environmental change frameworks. The chart also shows our mid-term and long-term agenda including which stakeholders and groups we would like to link with and share our network. You can follow the recent activities on our website. <http://www.chikyu.ac.jp/gec-jp/>





Upcoming Events

- **The 11th RIHN Regional Seminar**,
June 10 (Kyushu University
Research Institute for East Asia
Environments, Fukuoka)
“*Environmental Security in East Asia*”

http://www.chikyu.ac.jp/archives/event/asia_seminar/11/20120610_amaai.html

- **Rio+20 (UN Conference on Sustainable Development) and related events during Rio+20**,
June 11-22 (Rio de Janeiro, Brazil)
RIHN will be present during official and side-events of Rio+20 as part of our mission to convey and discuss the agenda of GEC-JP platform and transdisciplinarity networks with delegates from around the world. We will participate the *Scientific Forum of the Scientific and Technological Community* along with on-site and off-site events in case you might like to contact to us in Rio.

Recent Events

- **International Symposium (Managing Environmental Risks to Food and Health Security in Asian Watersheds Project)**,
March 1 (RIHN, Kyoto)
“*Food and health impacts of increased flood risk in Southeast Asia*”
- **International Symposium (Global Warming and the Human-Nature Dimension in Siberia: Social Adaptation to the Changes of the Terrestrial Ecosystem, with an Emphasis on Water Environments Project)**
March 7-9 (RIHN, Kyoto)
“*Global Warming and the Human-Nature Dimension in Siberia*”
- **RIHN-KLSC Workshop**
April 12-13 (RIHN, Kyoto),
“*Knowledge, Learning and Societal Change: Finding Paths to a Sustainable Future*”
- **First GEC-JP Workshop**
May 17 (RIHN, Kyoto),
“*CRA Proposal on Social-Ecological Innovation*”

Volume Special: The 6th World Water Forum



We participated the 6th World Water Forum during March 12-17 in Marseilles, France. The theme of this sixth gathering was to look for solutions (*Time for Solutions*). We joined the Japan Pavilion with our booth presenting our water-related projects to a wider audience and exchanged ideas on water-related environmental issues. During the Forum discussions, booth presentation and other side-events, we also introduced our mission to establish transdisciplinary research connecting science and society on global environmental issues with specific focus on water and water management issues and promoted our international collaboration with other researchers, stakeholders and users of water and those who are concerned about water and would like to take transdisciplinary-integrative action for these issues.

Research at RIHN

EPM (Environmental Policy Making) Study Group

RIHN is a pure academic institute and basically running inter-disciplinary and integrative research projects on environmental issues. So far we have hosted and funded 29 full projects some of which have already been completed and some of which are still being implemented by RIHN researchers.

As research is our main point and core instrument to communicate and interact with other research and related communities, we also initiate special research and study groups in order to support our ongoing projects and also to initiate new discussions and ideas among RIHN colleagues.

EPM is also one of these study groups where we invite RIHN affiliates and other researchers to discuss issues on environmental policy making by focusing on our integrative and inter-disciplinary understanding on the basic concepts of what policy, political institutions, local, national and international as well as global policy measurements as well as governance mechanisms mean and would be for better modeling and implementation of our research. We gather once a month and discuss one concept from the perspectives of natural sciences, social sciences and humanities. You can find further information and a list of topics on this link: http://www.chikyu.ac.jp/archive/event/EPM_list.pdf

Notice Board

• Project Applications

- If you are interested in initiating a research proposal at RIHN, you can first apply with your proposal to be evaluated for Incubation Study. Deadline for this application is usually end of March or beginning of April. For further details on research project application procedures and exact deadlines, please contact our office.

Contact: RIHN Research Cooperation Section, [kenkyou\[at\]chikyu.ac.jp](mailto:kenkyou[at]chikyu.ac.jp) ([at]=@)

• Job Openings

- Please check our homepage for the recent and updated job openings.
http://www.chikyu.ac.jp/index_e.html

Recent Publications

- NEW: RIHN News (back numbers)

http://www.chikyu.ac.jp/archive/RIHN_News/index_e.html

- RIHN Leaflet 2012

http://www.chikyu.ac.jp/archive/documents/leaflet/index_e.html

- RIHN Prospectus 2012

http://www.chikyu.ac.jp/archive/brochure/2011/index_e.html

- RIHN Annual Report 2010

http://www.chikyu.ac.jp/archive/annual_report/index_e.html

- NEW: RIHN Book Series: The Dilemma of Boundaries (Eds. Taniguchi and Shiraiwa, Springer, 2012)

<http://www.springer.com/environment/book/978-4-431-54034-2>